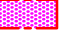
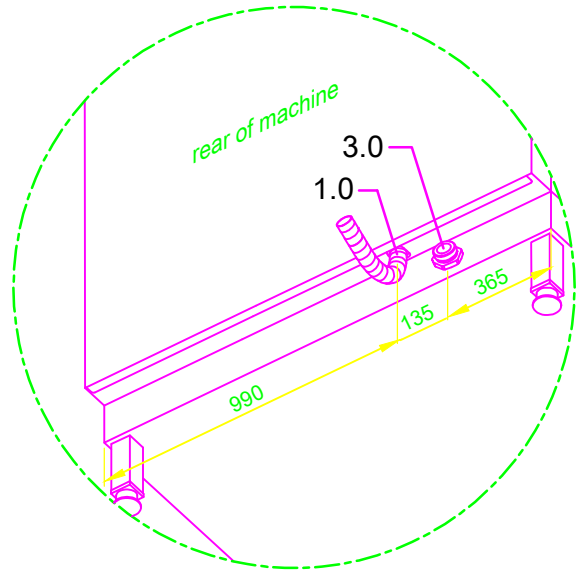
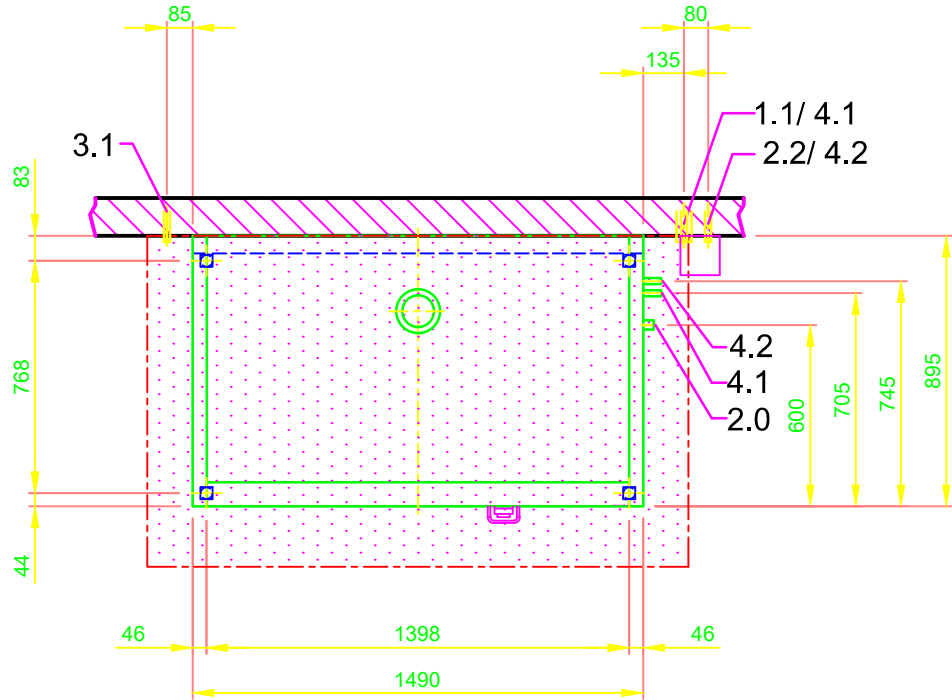
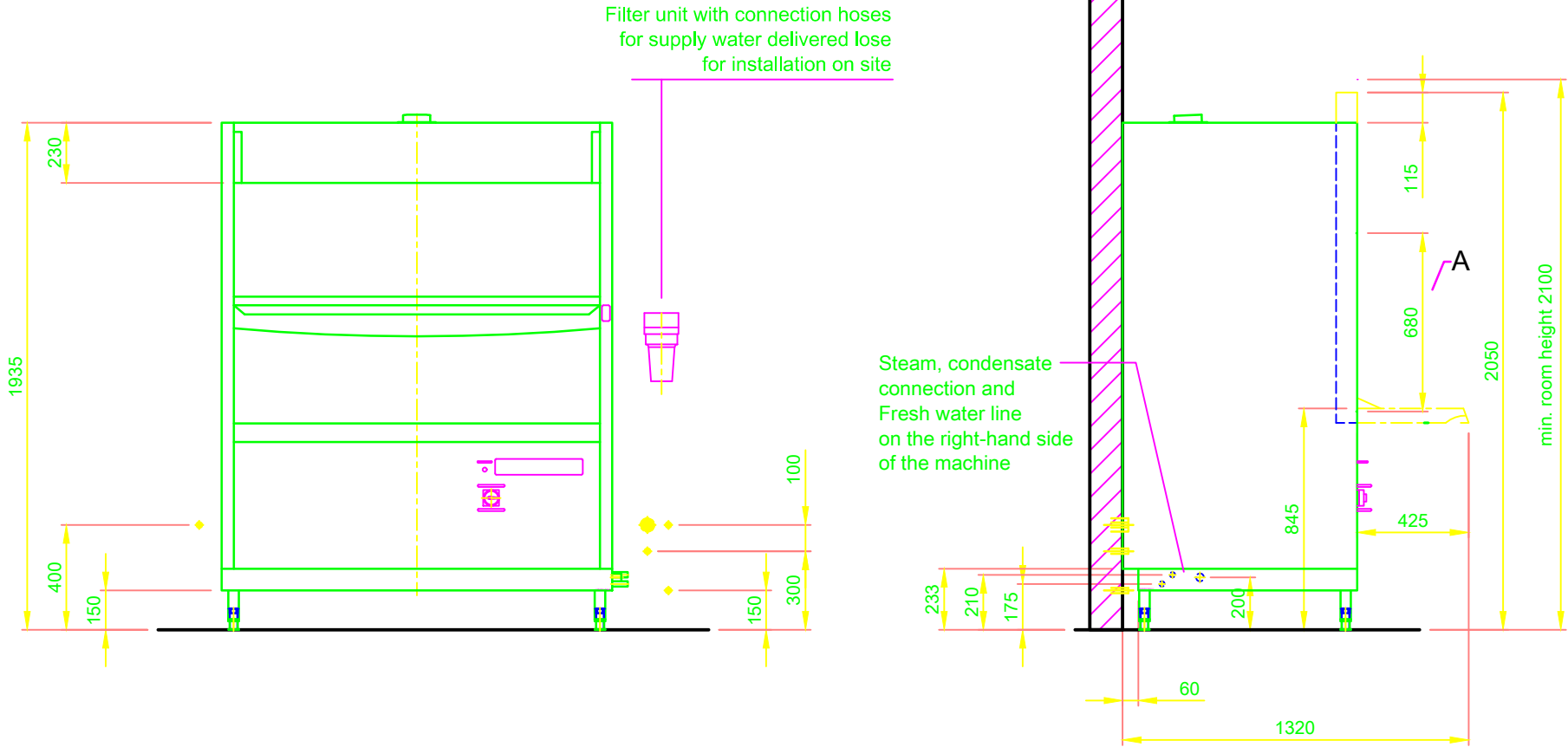
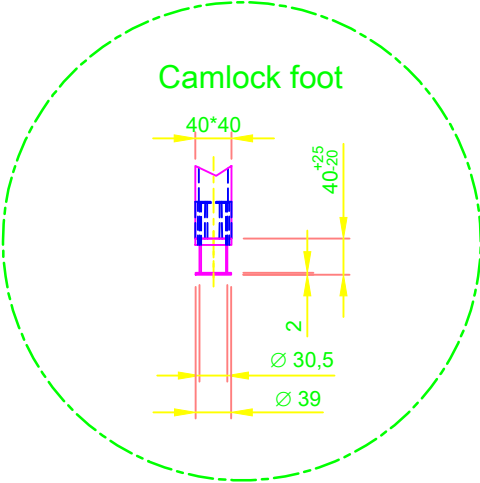


1.0	machine connection: drain connection hose, DN 22 hose fitted as odour trap in interior of machine
1.1	drain (max. 700 mm above finished floor level), DN 50
2.0	Machine connection: fresh water supply, G 3/4"
2.2	Soft cold water 10°C, DN 15, G 3/4 a max. 0,54 mmol/l CaCO ₃ (max. 3°dH) Flow rate: 5,0 l/min Minimum flow pressure: 60 kPa / 0,6 bar in front of solenoid valve Maximum pressure: 500 kPa / 5,0 bar stopcock and fine screen ≤ 25 µm
3.0	Machine connection: electrical connection cable 4G 2,5mm ²
3.1	electricity supply to the machine: 3PE 460V ~ 60Hz nominal current / - capacity: 8,7 A / 4,9 kW ⚡ Voltage equalising cable
	Electrical equipment suitable for supply voltage: 3 PE 440-480 V 60 Hz
4.1	saturated steam 2 bar overpressure
4.2	condensate. DN 20, R 3/4
6.0	Heat load of warewash area The values apply for the following room conditions: Room temperature 22 °C, rel. humidity 55 %  Recommended suction area according to German EN 16282 or any local regulations have to be observed to determine ventilation of wash areas The total heat load includes 6.1
6.1	Heat load of the machine in normal washing operation: for 10 programme cycles/h total 4,5 kW, perceptible 3,0 kW, latent 1,5 kW
	For the total space load, all other space loads must be considered. The space ventilation must be designed in accordance with EN 16282.
all cables, pipes etc leaving machine 1,8 m	

Machine Equipment

(A) Entry height
Preparation for local ECOLAB dosing system, including transformer
Back wall cladding
A "Rinse not ready" warning light has been included
Main switch, installed
Water filter unit, supplied loose
Air exhaust duct
according to USPH guidelines



Revision		Reference		Type	
m MEIKO		MASCHINENBAU GMBH & CO.KG. ENGLERSTR.3 77652 OFFENBURG GERMANY TEL. +49 0781/2030 TELEFAX +49 0781/2031303 E-MAIL: m-iplan@meiko-global.com		DISHWASHER STANDARD DRAWING / XXX	
MARINE CRUISE		Drawing-No. S00088222		Order-No.	
Scale 1:25		drawn: 10.08.2020 m-iplan		checked: 10.08.2020 m-iplan	